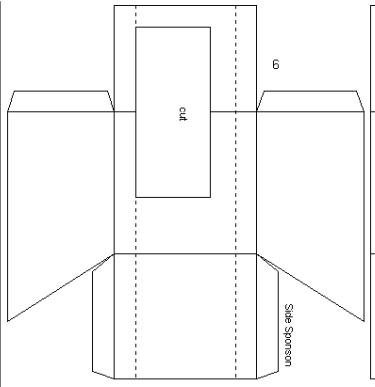
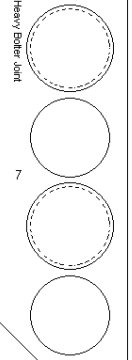


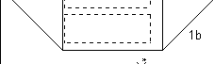
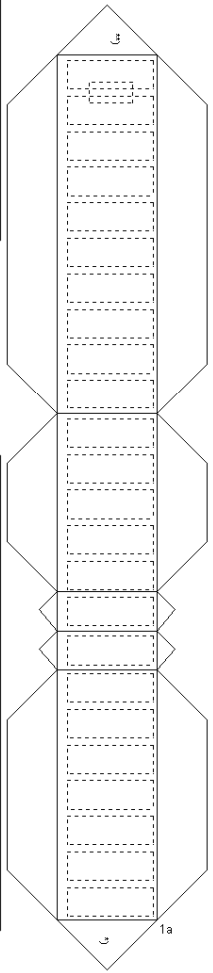
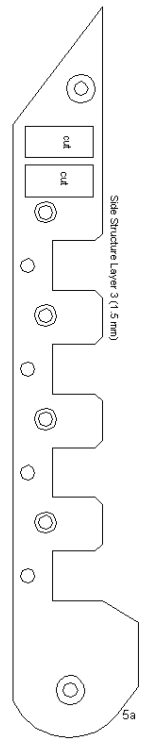
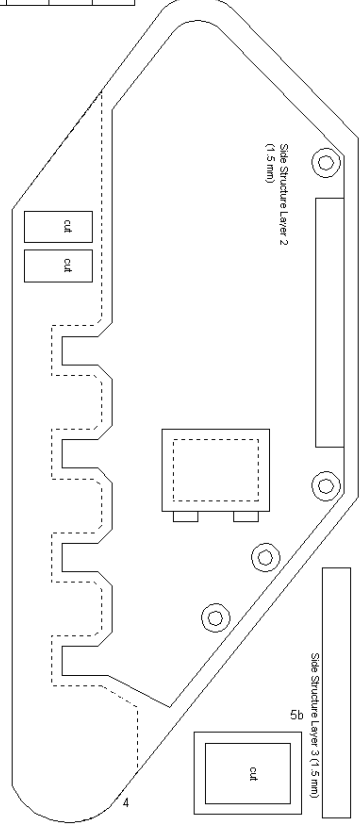
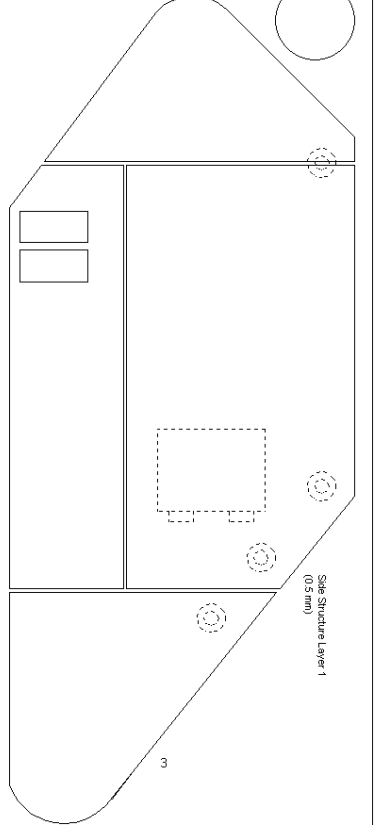
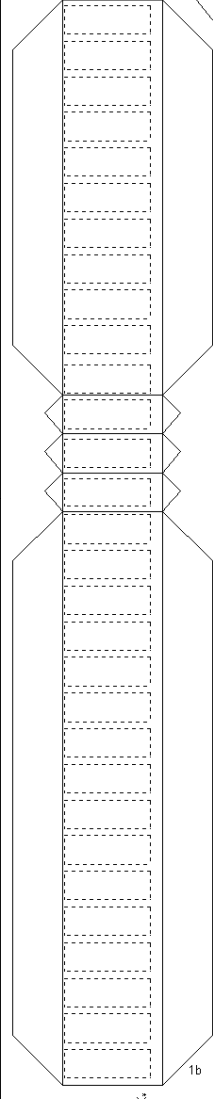
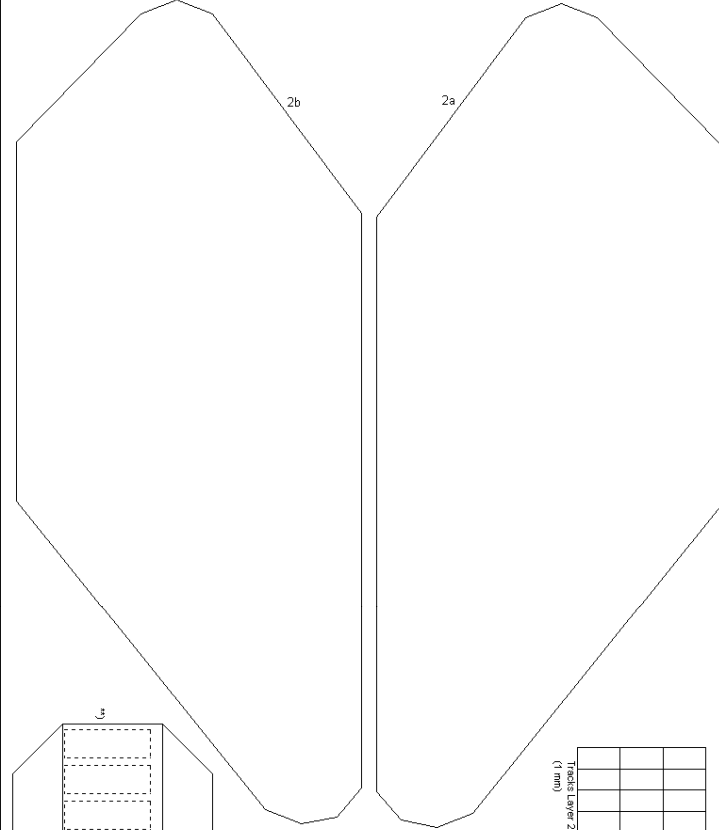
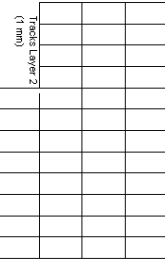
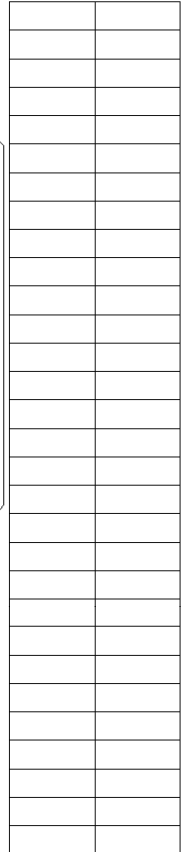
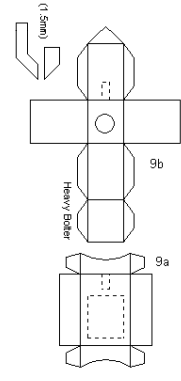
Spore Structure (1mm)

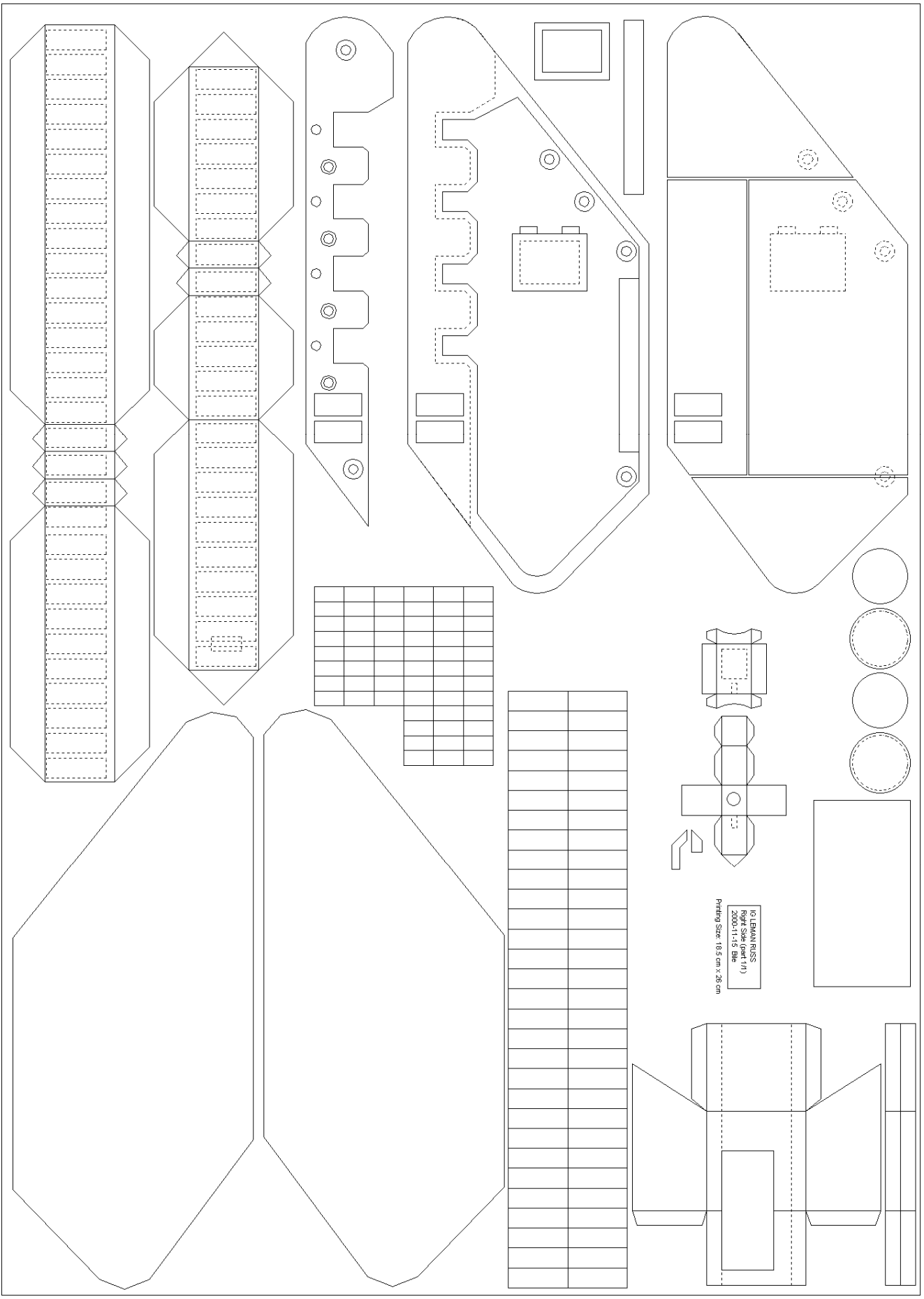


Glue small disc center on larger disc. Then bend this piece to a roll and close on both sides.

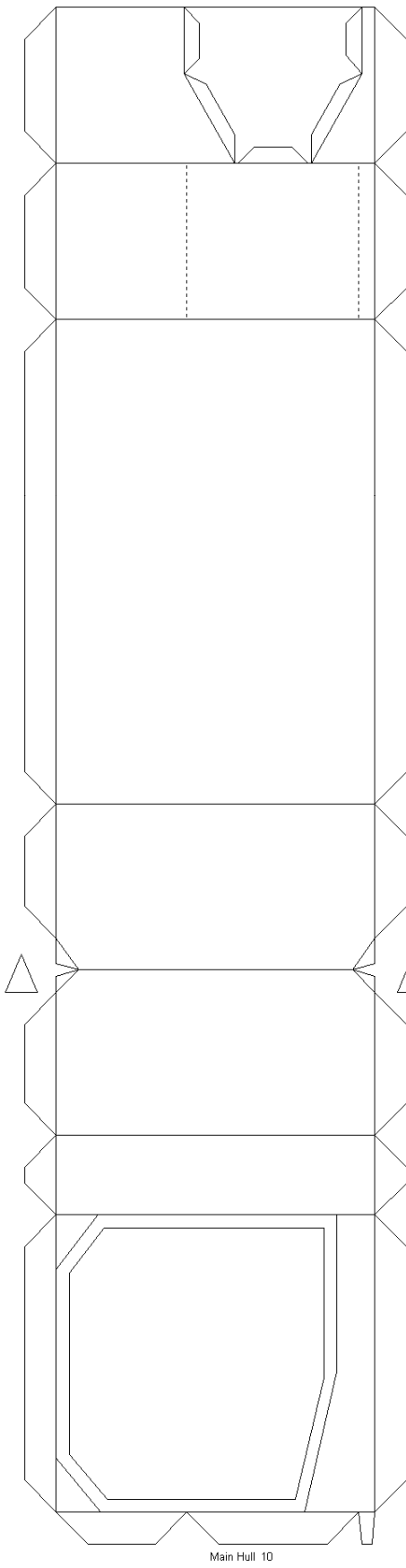


COLLEMAN'S
Lam Sheet (17)
2000-11-15 file
Printing Size: 10.5 cm x 28 cm

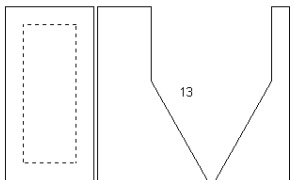




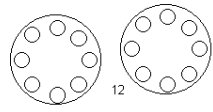
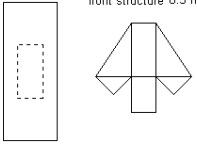
COLLEMAN RISS
Book Size (cm) 171
2000-11-15 09h
Printing Size 185 cm x 28 cm



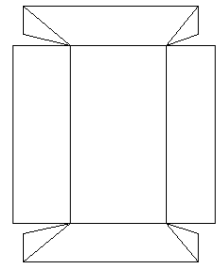
Main Hull 10



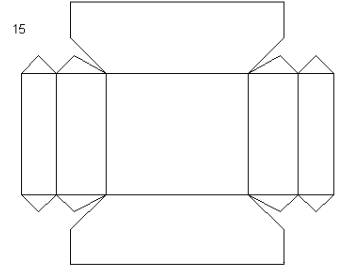
front structure 0.5 mm



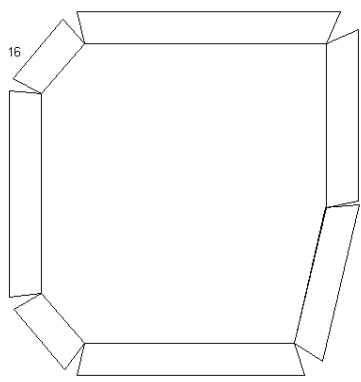
12



14



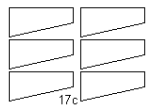
15



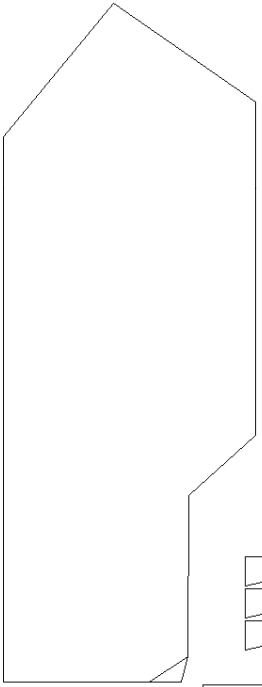
16

IG LEMAN RUSS
Main Hull
2000-12-04 Bile

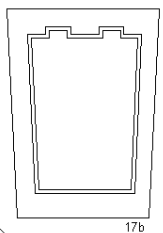
Printing Size:
26.0 cm high x 18.5 cm width



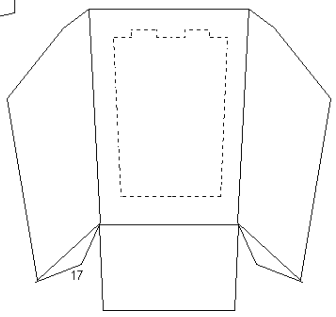
17c



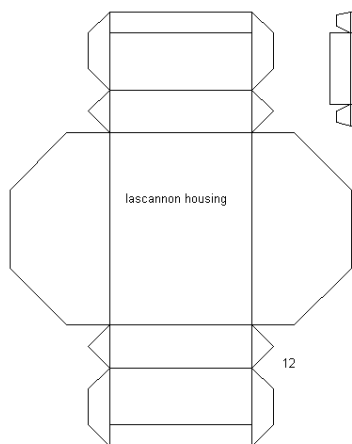
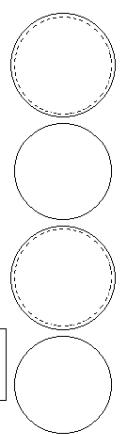
Main Hull sides 11a 11b



17b

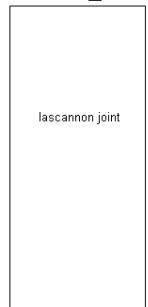
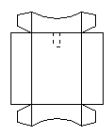


17

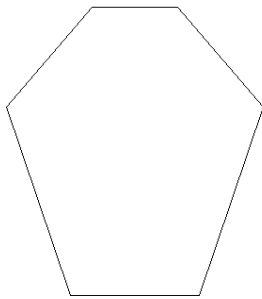


lascannon housing

12

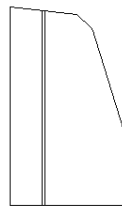
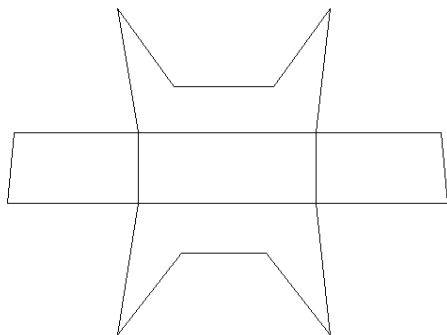
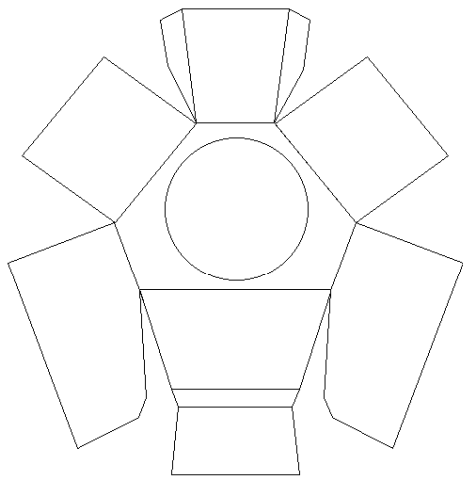


lascannon joint

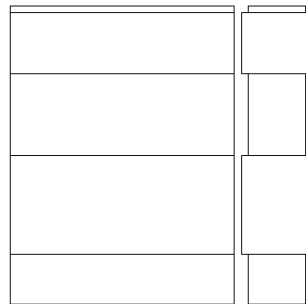
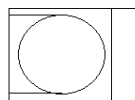
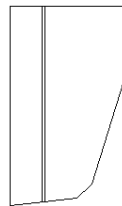


IG LEMAN RUSS
Turret
2000-12-04 Bile

Printing Size:
26.0 cm high x 18.5 cm width



side structure
0.5 mm



hatchet
3 layers, each 1.0 mm thick

